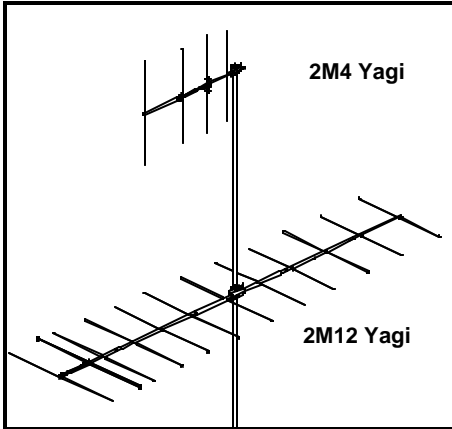
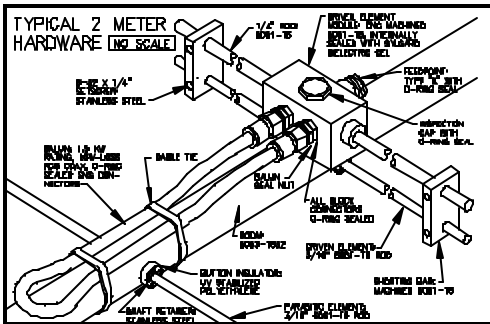


2 Meter Antennas



NEW TECHNOLOGY



We've combined the best new computer optimization programs and decades of VHF antenna design experience to maximize the performance of every 2 meter yagi. Gain, beamwidth and F/B are tailored, model by model, to enhance your applications. The heart of these antennas is the unique driven element module shown above. Originally designed for maritime ATS satellite systems, it proved so successful at matching, power handling and weather resistance that it is now in use on all our 2 meter yagis.

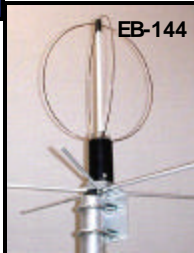
The pictures should tell you about our rugged, water proof designs. We continue to offer our popular standards like the 2M5WL. At the same time we push the state of the art with antennas like the versatile 2MXP20 building block. Polarity diversity is the wave of the future for EME but it also can be a great advantage for satellite and terrestrial communications. Throughout our line we strive to be "Leading Edge."

MODEL	2M4	2M7	2M9FM	2M9SSB	2M12	2M5WL	2M18XXX	2M8WLHD	2M5-440XP
Freq. MHz	144-148	144-148	145-148	144-146	144-148	144-148	144-146	144-144.7	2M & 440
Gain	7.5 dBd	10.3 dBd	12.0 dBd	12.0 dBd	12.8 dBd	14.8 dBd	15.3 dBd	17.0 dBd	9 / 12 dBd
Front-Back	20 dB	20 dB	24 dB	24 dB	25 dB	22 dB	22 dB	24 dB	12/25 dB
Beamwidth	E=54 / H=74	E=46 / H=54	E=35 / H=40	E=35 / H=40	E=32 / H=36	E=26 / H=29	E=25 / H=29	E=20 / H=21	Cross Pol.
VSWR	1.5:1 Max.	1.3:1 Typ.	1.4:1 Max.	1.4:1 Max.	1.2:1 Typ.	1.2:1 Typ.	1.2:1 Typ.	1.2:1 Typ.	1.3:1 Max.
Boom Length/Dia.	4' / 1"	8' 10" / 1"	14'6" / 1"	14'6" / 1"	19'6" / 1 1/2"	33' / 1-1/2"	36'3" / 1-1/2"	55' / 2.5"-1.5"	5'8" / 1"
Elements/T.Radius	4 / 4'	7 / 4' 6"	9 / 8'	9 / 8'	12 / 10' 6"	17 / 18' 9"	18 / 19' 6"	21 / 29'	5 / 10
Wind Area	.5 Sq Ft.	.74 Sq Ft.	1.2 Sq Ft.	1.2 Sq Ft.	1.5 Sq Ft.	2.7 Sq Ft.	2.9 Sq Ft.	5.5 Sq Ft.	1.0 Sq ft.
Wind Survival	100 MPH	100 MPH	100 MPH	100 MPH	100 MPH	100 MPH	100 MPH	100 MPH	100 MPH
Weight/Ship	3 lbs / UPS	4 lbs / UPS	6 lbs / UPS	6 lbs / UPS	8 lbs / UPS	12 lbs / UPS	14 lbs / UPS	38 lbs / UPS	4 lbs / UPS



The EB-144 offers smooth omnidirectional horizontal polarity at the horizon. Perfect for satellite or SSB. With φ-

The New HO Loop from M2 provides an omnidirectional, horizontally polarized signal ideal for mobile and base operations. Size - 11.25" square.



MODEL	2MXP20	2MXP28	2MCP14	2MCP22	2M Ho Loop	EB-144
Freq. MHz	144-146	144-146	143-148	143-148	144-144.5	135-150
Gain	13.3 dBd	15.1 dBd	10.3 dBdc	12.5 dBdc	4.86 dBd	6 db Hor/RHC
Front-Back	20 dB Typ.	24 dB Typ.	20 dB Typ.	25 dB Typ.	NA	NA
Beamwidth/Polarity	Cross Pol.	Cross Pol.	Circular Pol.	Circular Pol.	Omni, Hor.	Omni,Hor/RHC
VSWR	1.2:1 Typ.	1.4:1 Typ.	1.3:1 Typ.	1.4:1 Typ.	1.2:1 Typ.	1.5:1 Max.
Boom Length/Dia.	21'6" / 1-1/2-1"	34'6" / 1-3/4-1"	10' 6" / 1"	18'6" / 1-1/2-	NA	NA
Elements/T.Radius	10H/10V / 12'2"	14H/14V / 17'	7H/7V / 6'4"	11H/11V /	1 loop/11.25"	34"Hx28"W
Wind Area	1.9 Sq Ft.	3.3 Sq Ft.	1.1 Sq Ft.	2.5 Sq Ft.	.05 Sq Ft.	.07 Sq Ft.
Wind Survival	100 MPH	100 MPH	100 MPH	100 MPH	100 MPH	100 MPH
Weight/Ship	6 lbs / UPS	16.5 lbs / UPS	6 lbs / UPS	12 lbs / UPS	1 lbs / UPS	2 lbs / UPS